

Welcome

to our Impact Report



2025

Since joining Hospice Isle of Man in October 2025, I have developed a deep appreciation for the extraordinary and critical role that Hospice fulfils at the heart of our Island community.

Every day, our teams deliver compassionate, specialist palliative and end of life care to patients and support those closest to them. The impact of that care is profound. It brings comfort, dignity and reassurance at some of life's most difficult moments and it is a privilege to be trusted with the responsibility to lead such an organisation.

This report reflects another year of meaningful work by our staff and volunteers. We supported families across the Island, responded rapidly to referrals, and continued to extend access to both cancer and non-cancer patients. We never forget that behind every statistic is a person, a family, and a Hospice team committed to excellence.

At the same time, it would not be responsible to ignore the wider context in which we are operating. Demand for palliative care continues to grow, the complexity of cases is increasing, and the cost of delivering specialist services has risen significantly. Like many charities and healthcare providers, we are navigating sustained financial pressure.

For that reason, a central focus of my leadership is building long-term sustainability to secure the future of Hospice care on the Isle of Man. Sustainability is not about scaling back ambition; it is about protecting what matters most. It requires disciplined decision-making, careful prioritisation, and ensuring that every pound entrusted to us delivers the greatest possible benefit to patients.

Hospice has a proud history. My responsibility, alongside our Board and leadership team, is to ensure it has an equally strong and secure future. By strengthening our foundations now, we will protect the specialist care our community relies upon for years to come.

Thank you for standing with us.

Fiona Hatton
Chief Executive



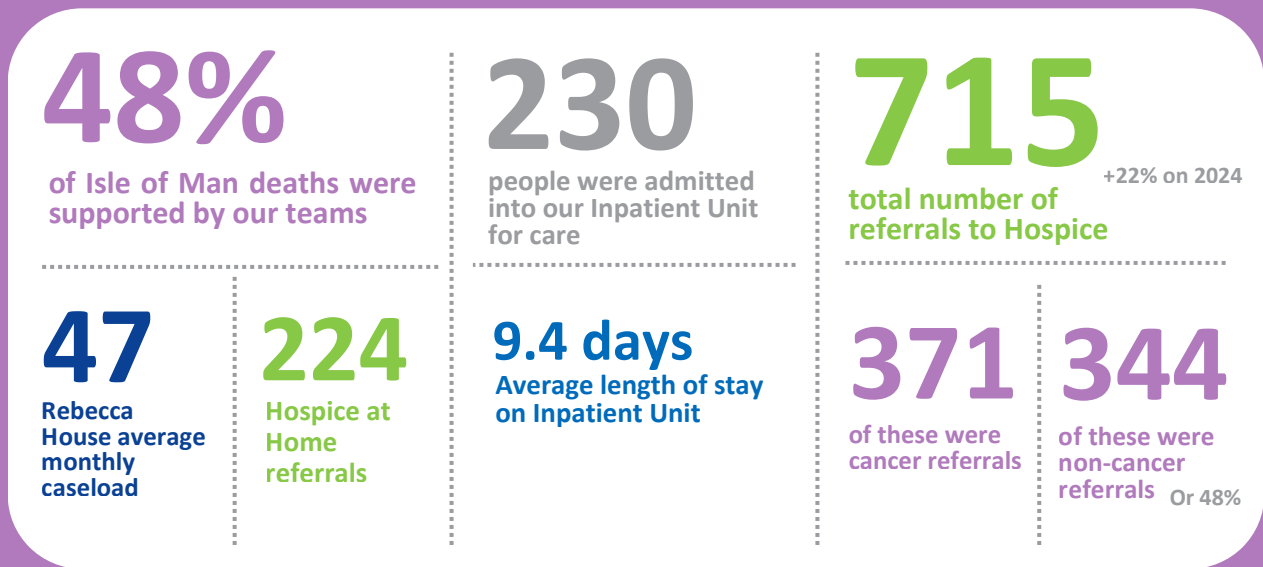
The Cost of Specialist Care

It cost over £7.2 million to provide Hospice care in 2025. While we experienced a planned operating deficit, we increasingly see rises in the cost of delivering specialist care at a rate that our funding cannot match.



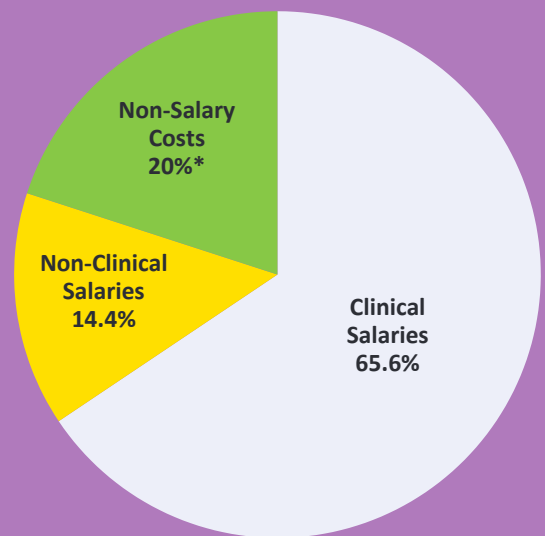
“Our people remain our greatest investment.”

We will not compromise the quality of our care, and we are rightly protecting and prioritising what matters most, providing the highest quality clinical and emotional care for those in the last chapter of their lives. You have our assurance that we will continue to work hard to constantly adapt and evolve to ensure that Hospice care is here not just today, but for the next generation.



Hospice is a community funded service. In 2025:

- 221** Individual and group fundraisers supported
- £198k** How much our fundraisers raised for us
- 116** Number of corporate partners
- 452** Amazing volunteers
- 8%** Facebook growth (our most popular digital platform)



Hospice Expenditure 2025

*Non-Salary Costs include Mediations, Clinical Equipment, Infection Control and Waste, Hospice at Home Service travel, Marketing, Recruitment, Clinical Systems, Administration, Bank Charges and Staff Education

Investing Wisely for the Future



In 2025, we delivered 110 palliative and end-of-life training sessions, including bespoke training



We upgraded our Ramsey Hospice Shop in-house, generating a record £7,200 in the first few days after reopening



Zurich and other volunteers have built a polytunnel in our garden to support wellbeing and grow produce for our kitchen



We've taken important steps towards improving sustainability and saving money, with the installation of new solar panels



We raised over £10,000 serving breakfasts during TT 2025 at Braddan Bridge Glamping Site

Looking Ahead Together

Having such great Hospice care on the Isle of Man is something we can all be proud of.

In 2025 your generosity enabled specialist teams to respond when families needed reassurance, expertise and compassion. You helped ensure that care was available not only within our In-Patient Unit and Rebecca House, but in people's homes, in hospital, and across the community. As we look ahead, the need for palliative and end of life care continues to grow. Meeting that need responsibly requires more than goodwill; it requires resilience, innovation and long-term financial strength.

We are taking deliberate steps to secure the future of Hospice care. That means focusing our resources where they make the greatest difference, strengthening income streams, and ensuring that every donation entrusted to us is used wisely and effectively.

Hospice has always been built on partnership. The greatest proportion of our income has always, and continues to, come directly from our community, from individuals, families, businesses, volunteers and fundraisers who choose to support end of life and terminal care. That collective commitment is what makes our Island Hospice possible.

If you are able to continue supporting Hospice, whether through regular giving, fundraising, corporate partnership, retail engagement or a gift in your Will, you are helping to protect this vital service for future generations.

Together, we can ensure that compassionate, specialist care remains available at no cost to everyone on the Isle of Man who needs it, today and in the years ahead.

Here's just some of the ways you can help:

Regular Giving

A regular gift, no matter how big or small, enables us to provide vital care and support to the people of our Island now, and in the future.

Legacy Pledging

20% of our income comes from legacy donations. These funds are essential to our future. For many people it is how they choose to thank us for support they or their loved ones have received.

Corporate Partnerships

By partnering with us businesses can make a meaningful impact through fundraising, sponsorship, and volunteering opportunities.

For more information, please visit www.hospice.org.im

Thank you for being part of Hospice!