

# Statement of Purpose



# CONTENTS

Purpose, Goals and Values	2
Person Centred Care	3
Services we provide	4-7
Keeping you safe	8-9
Hospice Isle of Man, Chief Executive, Registered Provider and Registered Manager	10
Education, training and qualifications	11
Our organisational chart	12

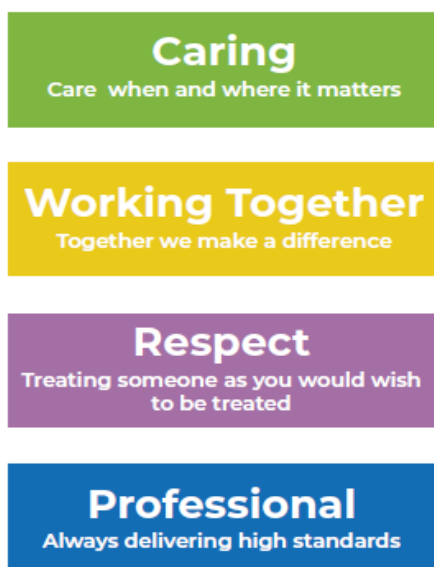
# Purpose and Goals of Hospice Isle of Man (our aims and objectives)

Hospice Isle of Man is a registered charity that started in 1983. It is governed by a Board of Governors and managed by the Chief Executive and Senior Managers. It is the only provider of specialist palliative care on the Isle of Man and our services are available at no cost to patients and families. We are committed to providing care to anyone on the Island with a condition that is terminal or life-limiting.

In October 2018 we published our Hospice Strategy which clearly explains our purpose and goals:



## Our Values – how we will deliver care



Our values were developed by our staff who talked to patients, their families, volunteers and visitors. We are proud of our values and we wanted to make it clear to everyone how we will deliver our care. To support our strategy we have developed the following diagram. It was produced from interviews with individuals where they told us what was important to them when receiving care.

## What matters to you:



'Adapted from the 2017 national voices person –centred care report'

We will apply these principles when we deliver our care and when we are planning new services.

## Person Centred Care

### Care Plans

All staff carry out holistic assessments in discussion with patients. Families will be involved in care planning if the patient wishes this to happen – *'The people who are important to me are welcomed, listened to and made to feel 'part of the team'*. Individual care plans are drawn up containing goals that the patient would like to achieve – *'we work to my goals and the quality of my life and death'*.

The individual's care plan is documented in the patient's health record and this provides a guide to staff providing care. In the In-Patient Unit, care is reviewed by the registered nurses in discussion with the medical team on a daily basis.

### Privacy and dignity for our patients

Staff at Hospice are committed to ensuring that all patients are treated with respect and that their dignity and privacy are maintained at all times. We want all of our patients to feel that they are safe and treated with compassion and that their values, beliefs and personal relationships are respected. This applies to all patients regardless of their age, gender, ethnicity, religious, social or cultural backgrounds, or their psychological or physical requirements.

Our Privacy and Dignity Policy has been developed in line with the '*Essence of Care – Patient Focussed Benchmarks for Clinical Governance*' (NHS Modernisation Agency, 2001), together with the word one by the Royal College of Nursing '*Dignity at the Heart of Everything We Do*' (2008).

Patients at Hospice are cared for in single rooms with en-suite toilet and showering facilities. All staff knock before entering a patient's room. A 'Do Not Enter' sign is placed on the door when the patient is being examined or receiving a treatment, or having private time. Every patient is addressed by their preferred name and all staff seek consent prior to any personal interventions or procedures.

We ensure that any patient who does not speak or understand English has access to an interpreter in a timely manner – within 2 hours if possible. Written translation aids are available for all patients.

We encourage patients to inform us of any preferences that they have, and as a team we always endeavour to meet their individual needs.

## **Spiritual Care**

The Hospice Pastoral Care team is available to provide spiritual care to patients, family members, staff and volunteers whether their spirituality is expressed through a faith or religious belief system or not. Hospice provides regular services of worship, prayer and reflection, including Communion in the Hospice Chapel or at the bedside

- We provide a service in the Chapel at 11.30am every Tuesday.
- We provide other 'special occasion' services when necessary.
- We facilitate family celebrations where appropriate i.e. baptisms, marriages, christenings and thanksgiving.

## **Care provided by Hospice Isle of Man – Adult and Childrens Services**

Hospice Isle of Man is available 24 hours a day, 365 days a year. Our multi-professional team offers individualised care in the Hospice, hospital or in the patient's own home – including nursing and residential homes – '*care is provided in the place of my choice*'. We will apply these principles when we deliver our care and also when we are planning new services.

### **Access and referral to our services:**

- Patients who have active and progressive disease where the focus of care is palliation of relief from pain and other distressing symptoms and quality of life. This can be malignancy (cancer) or a non-malignant condition such as heart failure, respiratory failure, renal failure or a progressive neurological condition
- The patient has specialist palliative care needs
- The needs of the patient can be met by services provided by Hospice Isle of Man and that the Hospice is the most appropriate agency to provide these services

Referrals to our services can be made by General Practitioners, Hospital Consultants, Clinical Nurse Specialists (including those working for the Older Person's Assessment Service), Long Term Conditions Co-ordinators, Senior District Nurses and Senior Allied Health Professionals.

## The services we provide include:

<p><b>In-Patient Unit (IPU)</b> – 12 beds:</p>	<p>Our purpose-built IPU provides specialist palliative and end of life care for patients who:</p> <ul style="list-style-type: none"> <li>• have complex symptoms</li> <li>• require respite care</li> <li>• have chosen Hospice for their end of life care</li> </ul> <p>24 hour nursing and medical support is provided to IPU patients. The unit is staffed by trained nurses specialising in palliative care and healthcare assistants who also have knowledge in palliative care.</p> <p>The IPU has been designed to provide a homely atmosphere and has 12 single rooms, each with TV and DVD player, radio, en-suite toilet and shower, sofa bed so that loved ones can stay, and a covered patio that opens out to the peaceful and beautiful gardens.</p> <p>Families and carers can visit at any time, based on the patient's wishes. Other visitors can visit between 2 -8pm.</p>
<p><b>Hospice Medical Team:</b></p>	<p>Our medical team provide daily medical care for patients in IPU as well as supporting our other clinical services in Rebecca House, the Scholl Wellbeing Centre and the Palliative Care Clinical Nurse Specialist Service. The medical team provide assessments in hospital or in the community. They are senior clinicians with qualifications and expertise in palliative care.</p>
<p><b>Medical Outpatients Clinic:</b></p>	<p>Patients with difficult to control symptoms can be referred to the Medical Outpatient Clinic within Hospice where they will be assessed by a senior doctor with expertise in palliative care. Changing medication or alternative interventions might be recommended to relieve symptoms.</p>
<p><b>Scholl Wellbeing Centre:</b></p>	<p>Provides therapeutic palliative day care from the point of diagnosis onwards. Patients are invited to spend one day a week take. They can take part in therapeutic activities and share experiences with others facing similar situations. The Scholl Wellbeing Centre provides therapeutic massage, manicure and hairdressing. We also provide a social programme that can include outside speakers.</p>
<p><b>Scholl Wellbeing Centre Drop-In Days:</b></p>	<p>Drop-In Days are held on Mondays and Thursdays. The Thursday session includes a fortnightly Children's Drop-In. The days are designed to provide a point of referral to other services, signposting and short term support, advice and information for anyone affected by cancer or any other life limiting condition. A referral is not needed to access this service.</p> <p>There is an additional Drop-In Day and on a Wednesday in Ramsey Town Hall to provide access for those living in the north of the Island.</p>
<p><b>Complementary Therapies:</b></p>	<p>Patients can experience a range of therapies as an out-patient, whilst attending the Scholl Wellbeing Centre, or during their stay as an in-patient. Our therapies include aromatherapy, massage, reflexology, relaxation, and counselling. Therapy sessions are also available for bereaved relatives and carers.</p>
<p><b>Rehabilitation Team:</b></p>	<p>Our Rehabilitation Team consists of an Occupational Therapist, a Physiotherapist and a Rehabilitation Support Worker. The service provides rehabilitation to the In-Patient Unit, the Day Therapy Unit and also in the community. In addition it offers:</p> <ul style="list-style-type: none"> <li>• Fatigue and Breathless Programme (FAB)</li> <li>• Stress Management Programme</li> <li>• Acupuncture Clinic</li> </ul>
<p><b>Occupational Therapy:</b></p>	<p>Occupational Therapy aims to maintain and, where possible, increase a patient's independence in everyday tasks such as washing, dressing, eating and domestic activities. This is achieved by retraining and by the use of specialist equipment. Creative and therapeutic activities adapted to the</p>

	individual's abilities are also used to improve the patient's quality of life.
<b>Physiotherapy:</b>	<p>Physiotherapy aims to maximise mobility and to maintain functional independence. By helping to relieve physical symptoms resulting from life-limiting illness, the physiotherapist plays an important role in helping to improve the quality of life for patients and to 'support people to be independent'.</p> <p>Treatment is planned following a comprehensive assessment aimed at achieving patient-led goals. As an illness progresses, the physiotherapist supports the individual by adapting treatments to suit their changing needs.</p>
<b>Lymphoedema:</b>	The Lymphoedema Service treats patients with secondary lymphoedema due to cancer and the side effects of its treatment.
<b>Palliative Care Clinical Nurse Specialists:</b>	Ensuring that patients can access care in the place of their choice is important. For many this is at home, including residential and nursing homes or the hospital. Our Clinical Nurse Specialists give advice on the management of pain and other distressing symptoms and prescribe medication to help alleviate these symptoms. They also provide information, psychological support and education to patients, their families, carers and other professionals. This service is available 7 days between 9am and 5pm.
<b>Hospice at Home:</b>	Nursing care is provided to support patients to remain and die at home if that is their preference, prevent crisis admission to the Hospice IPU or hospital and to give respite to family and carers. Care can be provided during the day and/or overnight, depending on the patient's and carer's needs and the overall demand on the service.
<b>Psychological Team:</b>	Offers psychological support to patients and their families from diagnosis. Visits can be arranged at the Hospice or in the patient's own home. The team give people the opportunity to express themselves and discuss their experiences. This service also supports staff and volunteers working within the Hospice.
<b>Young Person's Support Service:</b>	Provides counselling for children and young adults affected by life changing events. Psychotherapy from birth – 21 years. Sessions can be provided at home, Jade's place within hospice or at school.
<b>Social Worker:</b>	Provides patients, families and carers with, practical, financial and emotional support.
<b>Bereavement Support:</b>	Not everyone needs bereavement help, however support from Hospice is available once a loved one has died with the aim of helping people to adjust to a new way of living. Help can be given either on a one-to-one basis or in a group at hospice or at home.
<b>Our pastoral care team</b>	Offers spiritual care and support to all patients, families, carers and staff regardless of faith, religion or beliefs.
<b>Academic Research Team</b>	The aim of the Academic Research Team is to find the best ways for Hospice IOM to provide the right care at the right time in the right place for people needing palliative and end-of life care on the Isle of Man and their loved ones. Our work involves gathering information to understand the needs of service users, professionals and the public. We collaborate with experts around the world to learn, share and translate evidence into every day practice. We evaluate everything we do to ensure that we are delivering the best palliative and end of life care for our population.
<b>Care Provided by Rebecca House – Children's Services</b>	Rebecca House (RH) is the children's wing of Hospice and provides care for children and young people from birth up to the age of 18 who have a life-limiting or life-threatening illness. It is a purpose-built facility that offers a home from home environment in which physical, emotional, recreational and spiritual care is offered in a way that is appropriate for the child, young

	<p>person and family. RH provides respite, palliative and end of life care to help patients and their families to cope with their illness and lead as full and normal a life as possible.</p> <p>Rebecca House provides holistic care including play, massage and relaxation, music therapy, interactive technology and the use of a multi-sensory room. Care is provided in a flexible way to provide opportunities for families to have a rest and enjoy quality time with other family members and siblings.</p> <p>The team at Rebecca House includes Registered Children’s Nurses, Registered Nurse (Learning Disability), Nursery Nurses and HCA’s. Medical support is provided from the Hospice Medical Team.</p> <p>Rebecca House currently provides care six days a week with overnight care for one night per week, care hours and frequency of overnights vary in line with respite requests and emergency care needs.</p> <p>There are a wide variety of specialist in-patient facilities including four specially adapted en-suite bedrooms, a separate adapted bathroom and wet room, a children’s multi-function room, a kitchen and the Dream Room offering a full multi-sensory experience.</p> <p>In addition to these services the Rainbow Room Cold Bedroom facilitates the care of children and young people after death allowing families to spend additional time with their child or young person and enables staff to provide support in early bereavement.</p>
<b>Education</b>	Hospice Isle of Man leads the way in palliative care education. It supports the continuous professional development of its staff and provides education for all those professionals involved in the delivery of high quality palliative care on the Island. Staff have access to a wide range of courses & conference on and off Island.
<b>People &amp; Organisational Development</b>	It is important to ensure that we always have the right staff with the right skills in the right place to deliver our care. Recruitment and workforce planning are key to this as well as ensuring that all of our team continually demonstrate our values.
<b>Finance &amp; Operational Services</b>	<p>The finance team are responsible for producing clear and accurate management accounts for the Finance Committee and the Board of Governors. They work closely with the Chief Executive to manage the financial budget. All financial functions are carried out in accordance with the Finance Policy agreed by the Board of Governors.</p> <p>The operational services team are responsible for the effective running of the Hospice building, its maintenance, cleaning and catering facilities</p>
<b>Marketing &amp; Fundraising</b>	This team is totally focussed and driven with one core aim – raising around £5m each year. These funds are raised through events, donations, regular giving, in-memory donations and through legacies
<b>Administration Team</b>	The Hospice is supported by an administration team.
<b>Volunteer Services</b>	The Volunteer Service Manager and Volunteer Co-ordinator are the linchpin for the 500 volunteers who provide exceptional support within Hospice and its retail outlets



## Keeping You Safe:

### Patient records

All staff treat information about patients and their families in a confidential manner and do not share information without the patient's consent. Paper records are stored in locked cabinets in a secure room with key pad access. In October 2017 we introduced electronic patient records. All staff complete information governance training before access to this system.

### Storage and Administration of Medicines

On the IPU and Rebecca House, the responsibility for the safekeeping of the medicines rests with the appointed Nurse in Charge. All medicines are stored in a secure locked pharmacy room, where access is by keypad code number. There are separate lockable cupboards within this room as follows:

- Controlled Drugs Cabinet (that complies with the Misuse of Drugs (Safe Custody) Regulations 1973)
- Internal medicines cupboard
- Refrigerator for medicines
- There is also a lockable medicine trolley stored in this room

All staff adhere to the Clinical policy 'Safe Handling of Medicines' (2018)

### Use of medicines

Many medicines prescribed and administered subcutaneously in palliative care are used out with the terms of their Manufacturing Licence (off label use) and a small number are unlicensed. Medication used in this way is, however, accepted best practice and is evidenced in, and supported by, textbooks e.g. Palliative Care Formulary and guidelines such as the Isle of Man End of Life Guidelines (2018)

### Our fire precautions and emergency procedures

It is the policy of Hospice Isle of Man to ensure that it complies with the statutory fire provisions and maintains the safety of its patients, visitor's staff, and volunteers. Our fire policy has been developed with reference to the Health and Safety at Work Act 1974, Health and Safety Risk Assessments Code of Practice, Building Control Act 1991, Fire Precautions (Amendment) Act 1992, Fire Code (Policy and Principles), and the Health Technical Memorandum (HTM) 81 – Fire Precautions in New Hospitals.

We operate a fire alarm test every Monday at 2pm. If the fire alarm is heard at any other time it is not a test and staff, who all undergo mandatory training in Hospice Fire procedure, follow the procedure described in our Fire Policy (Keeping you safe).

### Smoking/Use of electronic cigarettes

Hospice has a smoke free policy.

- The designated smoking shelter at the back of the Hospice building is the only area where smoking or use of electronic cigarettes for both patients and visitors is allowed.
- Due to security issues, access between 10pm-6am access to this shelter must be agreed with the nurse in charge.
- All users of the smoking shelter do so at their own risk.
- Those requiring assistance or supervision whilst smoking, will need a relative or friend to help them. Nursing staff are not expected to assist or supervise patients who smoke at any time.

## **Our adult and children's safeguarding policies**

Hospice Isle of Man has a core responsibility to provide safe, effective and high quality care. We recognise that safeguarding is everyone's business and that every individual in the organisation has an obligation in ensuring the protection of vulnerable adults and children . We believe all adults and children have the right to freedom from harm and we take the appropriate measures to:

- Ensure that abuse does not occur within our service.
- Report all cases of suspected, alleged or identified abuse of adults, with whom we come into contact, to the Safeguarding Adults Team, within the Department of Health & Social Care.
- Report all cases of suspected, alleged or identified abuse of children, with whom we come into contact, to the Isle of Man Safeguarding Children's Board and follow their procedures.
- Protect and support individuals where harm has been identified.
- Ensure multi-disciplinary involvement is undertaken, as appropriate/necessary
- All staff follow the Inter Agency Safeguarding Adults – Adult Protection Policy 2016-2018
- All staff attend the recommended mandatory training for Safeguarding adults and children.

## **Therapeutic techniques (used and supervision arrangements)**

Hospice has a Policy for Checking Professional Registration (keeping you safe) which is to ensure that a prospective employee is recognised by the appropriate regulatory body and that they have the right qualifications to undertake the duties required by the advertised post. There are currently eight regulatory bodies covering the health professions their four main functions which are:

- Establishing standards of competence, ethics and conduct.
- Establishing standards for training.
- Keeping a register of those who meet the standards.
- Dealing with registrants who fall short

This applies not only to our Doctors and nurses but also to our Allied Health Professionals (Physiotherapist, Occupational Therapist, Counsellors, Psychologists and Social worker). Various complementary therapies are offered at Hospice, including aromatherapy massage, reflexology and reiki. Our Complementary Therapy team are members of the IFPA – International Federation of Professional Aromatherapists. All professionals have access to clinical supervision from a qualified member of their own profession with appropriate knowledge of a palliative care service

## **Feedback and Compliments**

It is important to all staff at Hospice Isle of Man that the service we provide is appropriate, professional and meets the needs of the individuals referred to us. As an organisation we welcome feedback or suggestions about our care /services from patients, their families and carers. We offer a number of ways people can feedback to us, e.g. Verbal feedback, written suggestions via our suggestion box in the IPU reception, written suggestions /complaints or through our feedback questionnaire '[What matters to you matters to us](#)'. We keep a record of all the letters/cards of thanks, comments or complaints. Each year we have quality accounts available to the public detailing audits and feedback about our services. This includes any developments made to the service over the year.

## What to do if you have a complaint

If you are not happy with any aspect of the care or service provided by Hospice Isle of Man, please let us know. By alerting us to a problem and giving us the opportunity to put it right, you are also helping other patients. As an organisation we undertake to treat all complaints seriously and will investigate them thoroughly. We guarantee that there will be no retribution following the complaint, we will acknowledge your concerns and give you a full explanation of what has happened and make every effort to learn from any mistakes or failures which have occurred. For further information please refer to our information leaflet 'What to do if you want to make a complaint' available on our website.

## Hospice Isle of Man Registered Provider, Chief Executive, Responsible Person and Registered Manager

Registered Provider	Anne Mills Chief Executive  Hospice Isle of Man Strang, Douglas, IM4 4RP Tel: 01624 647400	Has overall responsibility for the hospice  <b>Registration No:</b> ROCA/P/0187A <b>Type of Service:</b> Independent Hospital/Hospice
Responsible Individual	Diane Corrin Nurse Consultant Hospice Isle of Man Strang, Douglas, IM4 4RP	Diane joined the Hospice in 1996 <b>Qualifications:</b> RGN, RN, Non-Medical Prescriber (V300) in 2005, DipHE in Health Studies (2001), BSc (Hons) Cancer & Palliative Care (2003), MA in Hospice Leadership with merit (2011)
Registered Manager	Christine M Bloomer Director for Palliative Care Services Hospice Isle of Man Strang, Douglas, IM4 4RP	Christine joined Hospice in 2003 <b>Qualifications:</b> RGN, Diploma in District Nursing with distinction (1988), BA in Health Studies (1994), Non-Medical Prescriber V100 (1999), BSc in Nursing with Specialist Practitioner in Palliative Care with commendation (2002), Non-Medical Prescriber V300 (2005), Chartered Management Institute (CMI) Advanced Diploma in Strategic Leadership and Management (2012)

We are regulated by the Registrations and Inspections Unit, part of the Department of Health & Social Care, who inspects our service on a regular basis. If you would like to read our latest report, please ask a member of staff or refer to the Registrations & Inspections website (click on Independent Hospitals).

<https://www.gov.im/about-the-government/departments/health-and-social-care/registration-and-inspection-unit/inspection-reports>

(please click Independent hospitals)

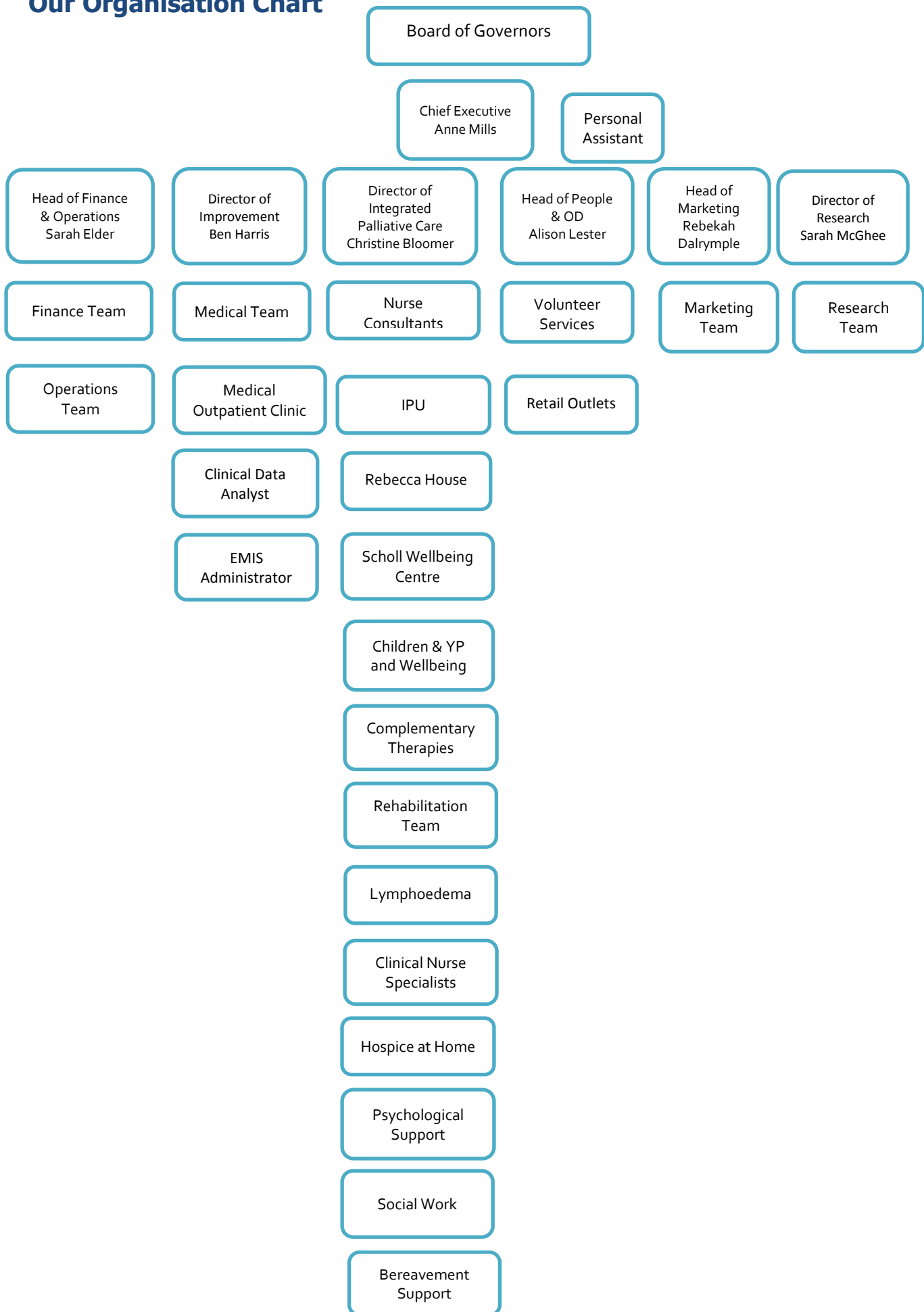
## Training, staffing and qualifications

As a Hospice we recognise the importance of our own staff and volunteers receiving specialist palliative care training. All staff have access to a wide range of courses, conferences and study days on and off island. Our aim is to promote the highest quality palliative and end of life care for everyone through the development of knowledge, skills and attitudes. It is important that all professionals learn the core principles of palliative care, such as dignity, autonomy, good symptom management, psychosocial and spiritual care and their application in clinical practice.

In order to have a safe working environment for patients, their families, staff and volunteers, all staff and volunteers must undertake mandatory training. This includes health and safety, fire, infection control, record keeping, food hygiene, anaphylaxis, basic life support, safe guarding adults and children, moving and handling and capacity. For further information on in-house and mandatory training please refer to our training prospectus.

Qualifications you can expect our staff to have		
Role	Number of staff	Qualifications expected for role
Chief Executive and Senior Managers	6	Academic, management and professional qualifications will be specifically related to their role
Medical Team	2.3 WTE Rotational F1 doctors from Noble's	Registered Medical Practitioners with qualifications in palliative care
Registered Nurses and Registered Children's Nurses	30.96 WTE	Registered General Nurses Registered Children's Nurses Registered Nurse – Learning Disability
Healthcare Assistants	16.8 WTE	QCF Level 2 or 3 qualifications
Nursery Nurses NNEB	3.4 WTE	NVQ Level 3
Social Worker	1.0 WTE	Social Work qualification Registered with Health & Care Professions Council
Physiotherapist Occupational Therapist Rehabilitation Support Worker	1.92 WTE	Registered Physiotherapist Registered Occupational Therapist Registered with Health & Care Professions Council
Psychological Therapist s Bereavement Counsellors	2.2 WTE	PhD Clinical Psychology Diploma in Counselling Registered with Health & Care Professions Council
Young Person's Support Worker	1.4 WTE	Diploma in Psychotherapeutic Counselling
Complementary Therapists	1.6 WTE	All therapists have qualifications to deliver therapies Registered with International Federation of Professional Aromatherapists
Research Team	4.5	PhD, Msc
Administration Team	18.87 WTE	Qualifications will be specifically related to their role
Operational Support Team	12.77 WTE	Qualifications will be specifically related to their role

# Our Organisation Chart



## **Further Information:**

**This guidance is available in alternative formats e.g. large print. If you require an alternative format please contact [admin@hospice.org.im](mailto:admin@hospice.org.im), or telephone 647400**

**This guidance is updated on an annual basis by the registered manager and responsible person.**